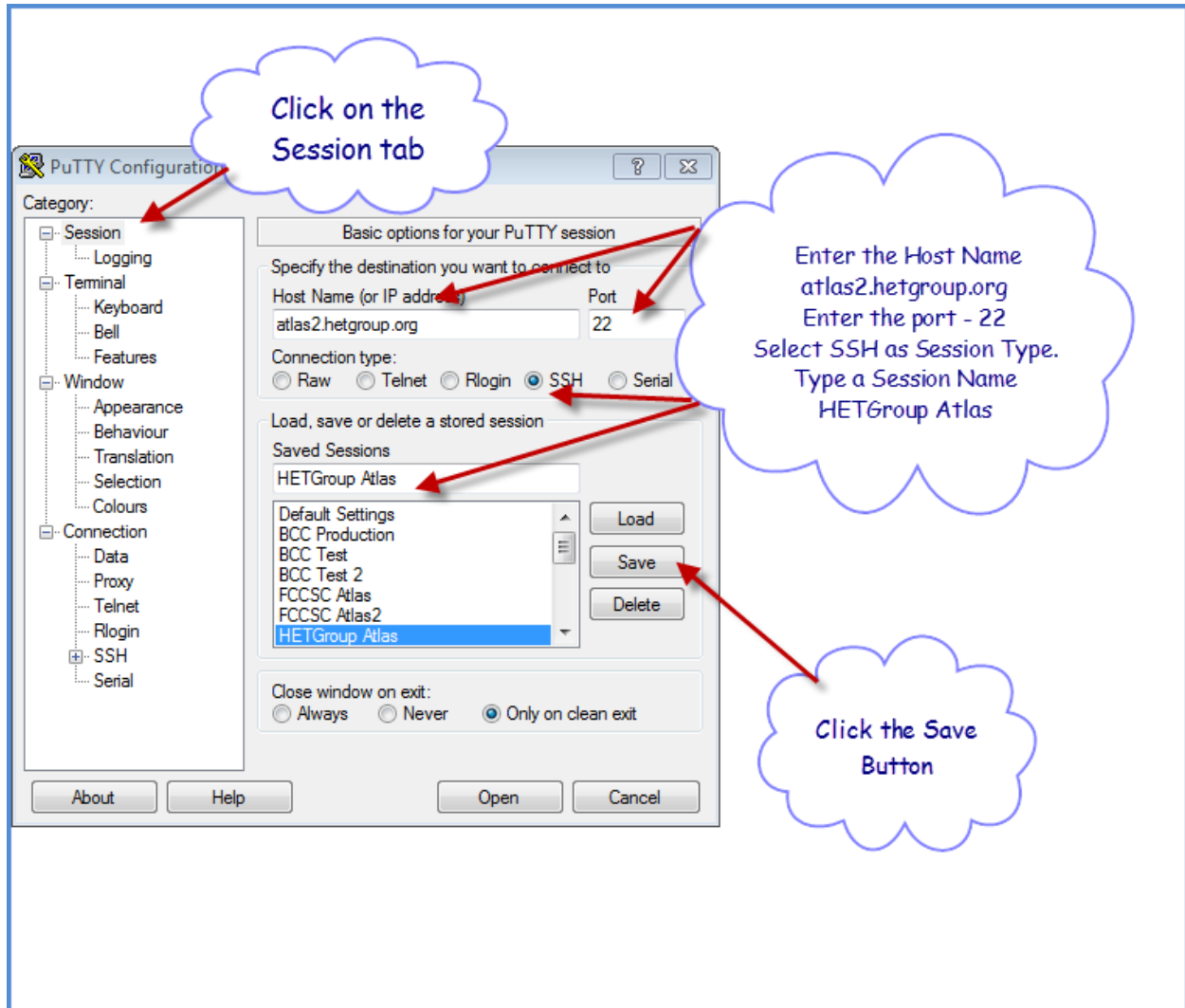


## Putty Configuration

The Putty Emulator is open source software and can be downloaded from [www.putty.org](http://www.putty.org)

The following are screen shots of setup required to access [atlas2.hetgroup.org](http://atlas2.hetgroup.org)

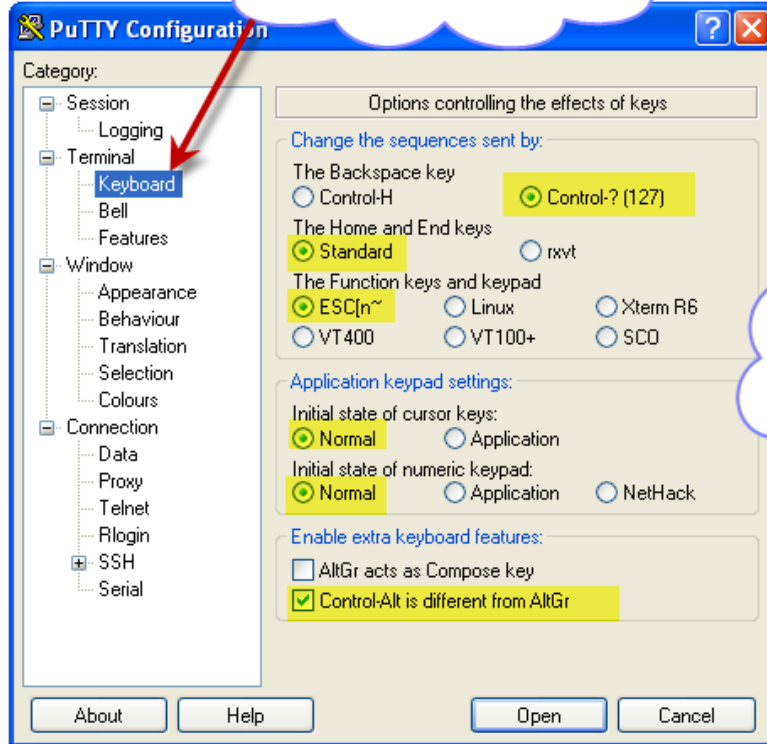


The screenshot shows the PuTTY Configuration dialog box with the following settings and annotations:

- Category:** Session (indicated by a cloud annotation: "Click on the Session tab")
- Basic options for your PuTTY session:**
  - Specify the destination you want to connect to:
    - Host Name (or IP address): atlas2.hetgroup.org (indicated by a cloud annotation: "Enter the Host Name atlas2.hetgroup.org")
    - Port: 22 (indicated by a cloud annotation: "Enter the port - 22")
  - Connection type: SSH (selected) (indicated by a cloud annotation: "Select SSH as Session Type.")
  - Type a Session Name: HETGroup Atlas (indicated by a cloud annotation: "Type a Session Name HETGroup Atlas")
- Load, save or delete a stored session:**
  - Saved Sessions list: HETGroup Atlas (indicated by a cloud annotation: "Click the Save Button")
  - Buttons: Load, Save, Delete
- Close window on exit:** Only on clean exit (selected)

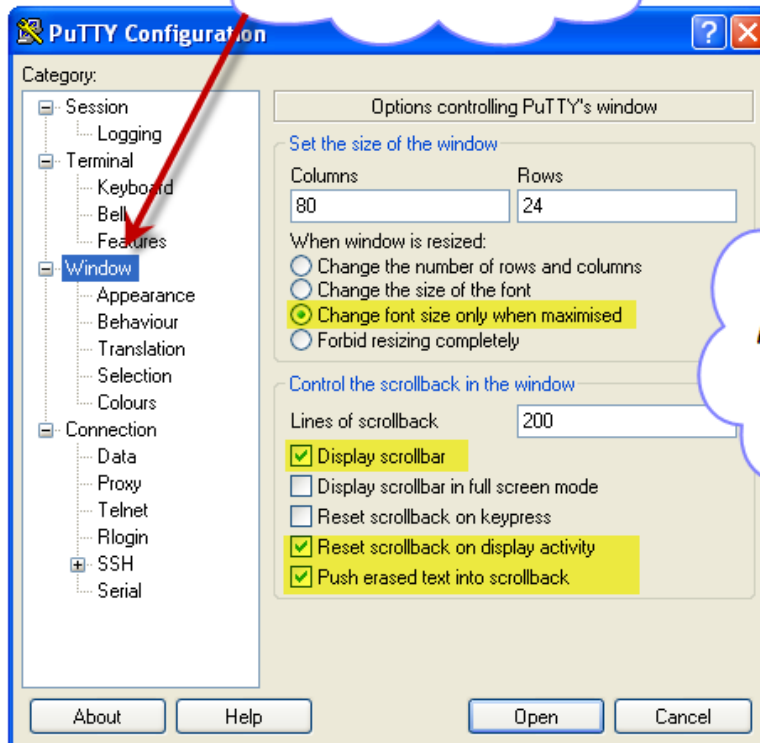
At the bottom of the dialog are buttons for About, Help, Open, and Cancel.

Click on the Keyboard tab



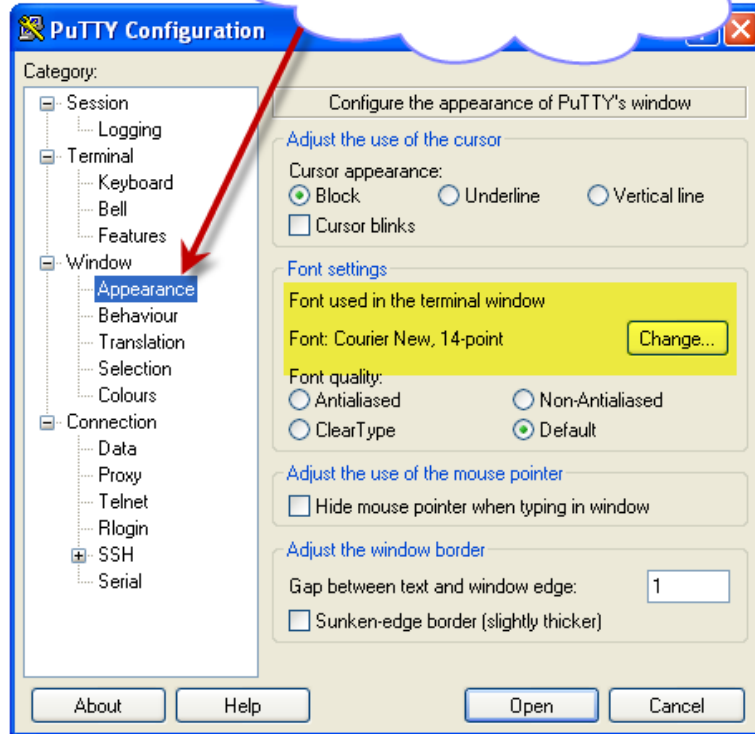
Select the highlighted radio buttons.

Select the Window tab

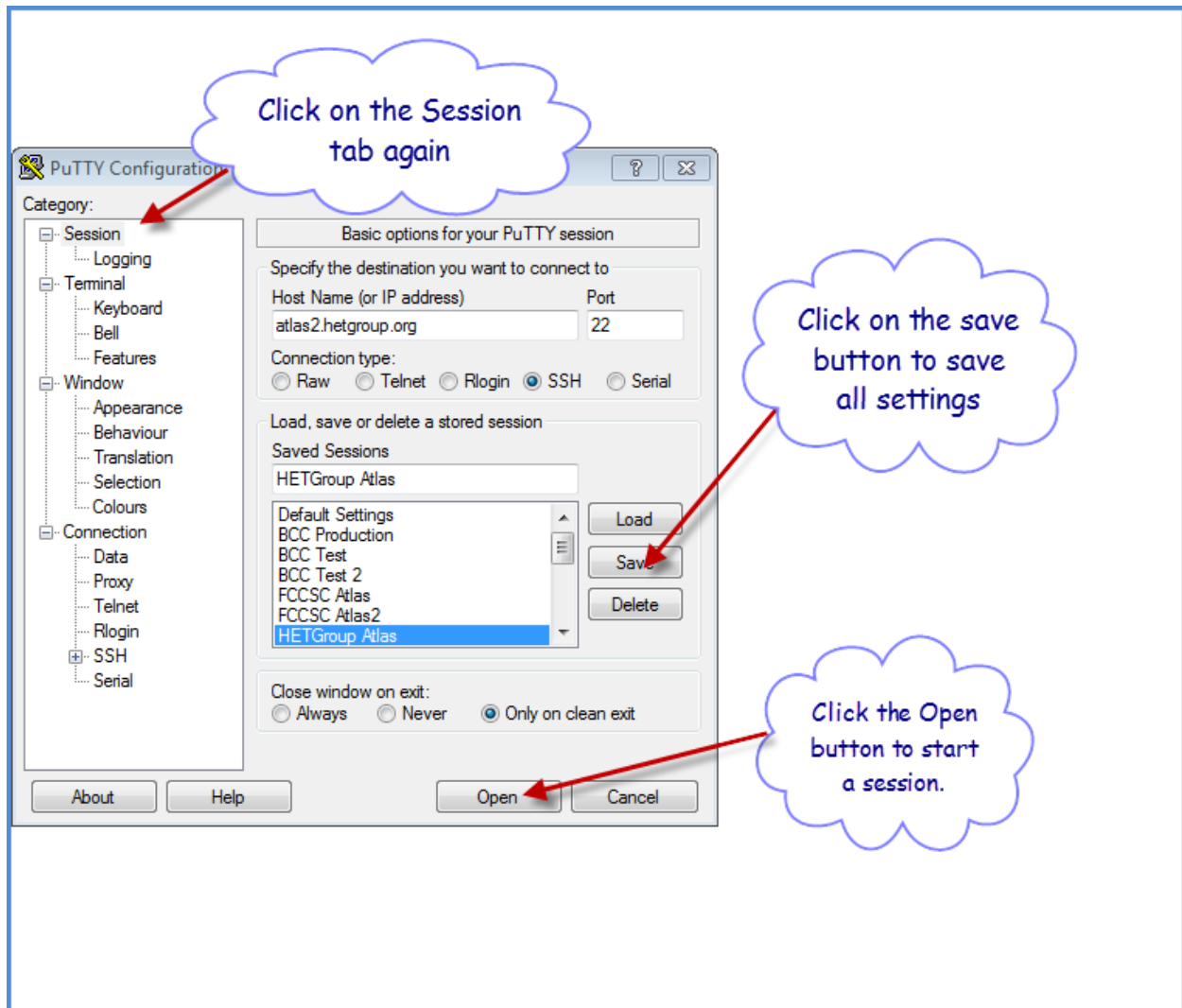


Make the highlighted selections.

Select the Appearance tab



Make the Font  
Courier New, 14  
points



After clicking the Open Button, the Putty emulator session will be started.

Double click on the blue window bar to Open Putty in a full screen.

Enter your userid and password to log in to the HETGroup Development machine.